

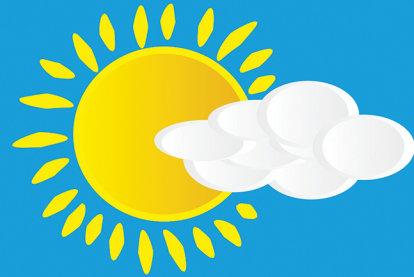
# CRAPPIE CHEATSHEET



**+ SCENT**  
- TIGHT BITE DAYS  
- STAINED WATER  
- NIGHT TIME



**OVERCAST**



**SUNNY**

**CLEAR WATER**



**STAINED WATER**



**ACTION**

  
**MOVING BAITS**  
- FEEDING DAYS  
- DUSK & DAWN  
- HORIZONTAL PRESENTATION

  
**JIGGING BAITS**  
- TIGHT BITE DAYS  
- VERTICAL PRESENTATION

**SIZE**

  
**2" BAITS**  
- WARMER WATER  
- FEEDING DAYS  
- PRE & POST SPAWN

  
**1" BAITS**  
- COLD WATER  
- TIGHT BITE DAYS  
- DURING SPAWN

**SPAWN SEASON**

**50°F - 60°F = PRE-SPAWN**  
- NATURAL COLOR MOVING BAITS  
- DROP OFFS, NEAR FLATS

**60°F - 72°F = SPAWN**  
- DARK COLOR SMALL CREATURE BAITS  
- SHALLOW WATER NEAR CATTAILS, GRASSES, BRUSH, OR PAD STEMS

**65°F - 75°F = POST-SPAWN**  
- NATURAL COLOR MOVING BAITS  
- DROP OFFS, OPEN WATER



**DUSK & DAWN**  
MOVING BAITS IN OPEN WATER



**MIDDLE OF DAY**  
JIGGING BAITS ON STRUCTURE



**COLD WATER**  
SLOW TO NO MOVEMENT IN ACTION OF BAIT  
USE A BOBBER TO ISOLATE MOVEMENT

**REGULAR SEASON**



**WINDY DAY**  
KEEP DISTANCE / CAST TO STRUCTURE  
SLOW MOVEMENTS / WATCH BOAT SLAP  
USE LARGER BAITS



**CALM DAY**  
KEEP DISTANCE / CAST TO STRUCTURE  
ADD MOTION = JIG, POP OR SWIM

 **SHALLOW**  
DURING STABLE WEATHER

 **DEEPER**  
DURING COLD FRONTS